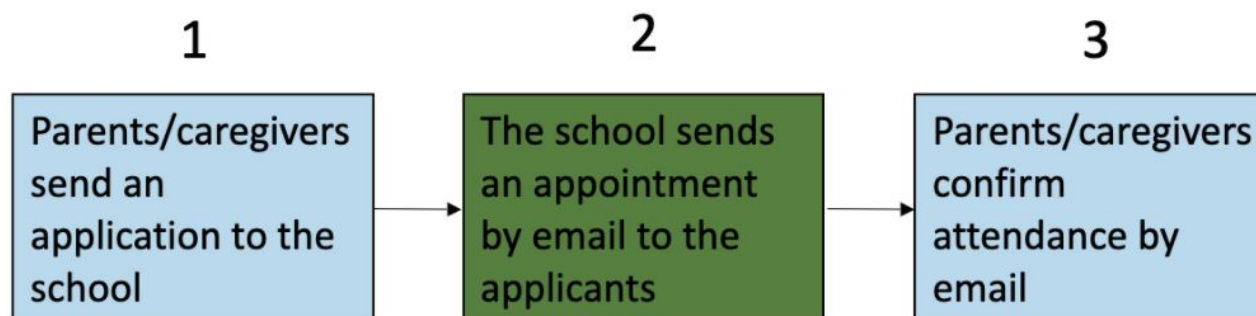


Enrolment process for L'Archipel Special Programme

If you wish to apply for a space in L'Archipel Special Programme at Richmond Road School the current document will help you understand and follow the enrolment process.

The first steps of the enrolment process:



1. The application form for Special Programme can be found on the school's website [Enrolment](#) or requested from the school office office@richmondroad.school.nz
Applications must be received at the office no later than **Friday 25th of September 2020**.
2. Please provide evidence of your child's attendance to a French speaking pre-school for the last 12 month, if applicable.

The scoring system on which the point allocation is based at the interviews:

SCORING SYSTEM

	Scoring System	Score
1	Proficiency in French Language	1-10
2	Siblings of current students in the L'Archipel Special Programme, a child of an employee of the board of the school or a child of a member of the board of the school.	4
3	Siblings of former students in the L'Archipel Special Programme.	3
4	Applicants who have attended any New Zealand based French language provider on a regular basis for at least the preceding year (evidence must be provided*).	3
5	Applicants who have attended any other overseas French school or preschool on a regular basis for at least the preceding year (evidence must be provided*).	1
6	A child of a former student in the L'Archipel Special Programme.	1
7	Eligible applicants who live in-zone of the school.	1

*E.g. certificates, receipts, invoices showing length/period of attendance

Important Notes

Criteria 1. Proficiency in the French language will be assessed using documented methodology developed by FRENZ (and approved by the Board of Trustees).

The proficiency of an applicant will be ranked on a scale of 0 to 10, 0 being no ability and 10 being fluent in French.

The score given to any applicant will be determined by a teacher and a person appointed by FRENZ (with the approval of the school Board of Trustees). The decision will be final and not subject to appeal.

Criteria 2. Applicants who are siblings of current students of the Special Programme will be assigned 4 points **WHERE** parents or caregivers' adherence to the Special Programme Supporting Principles have been met.

IF those requirements have **NOT** been met, the score will be 0.

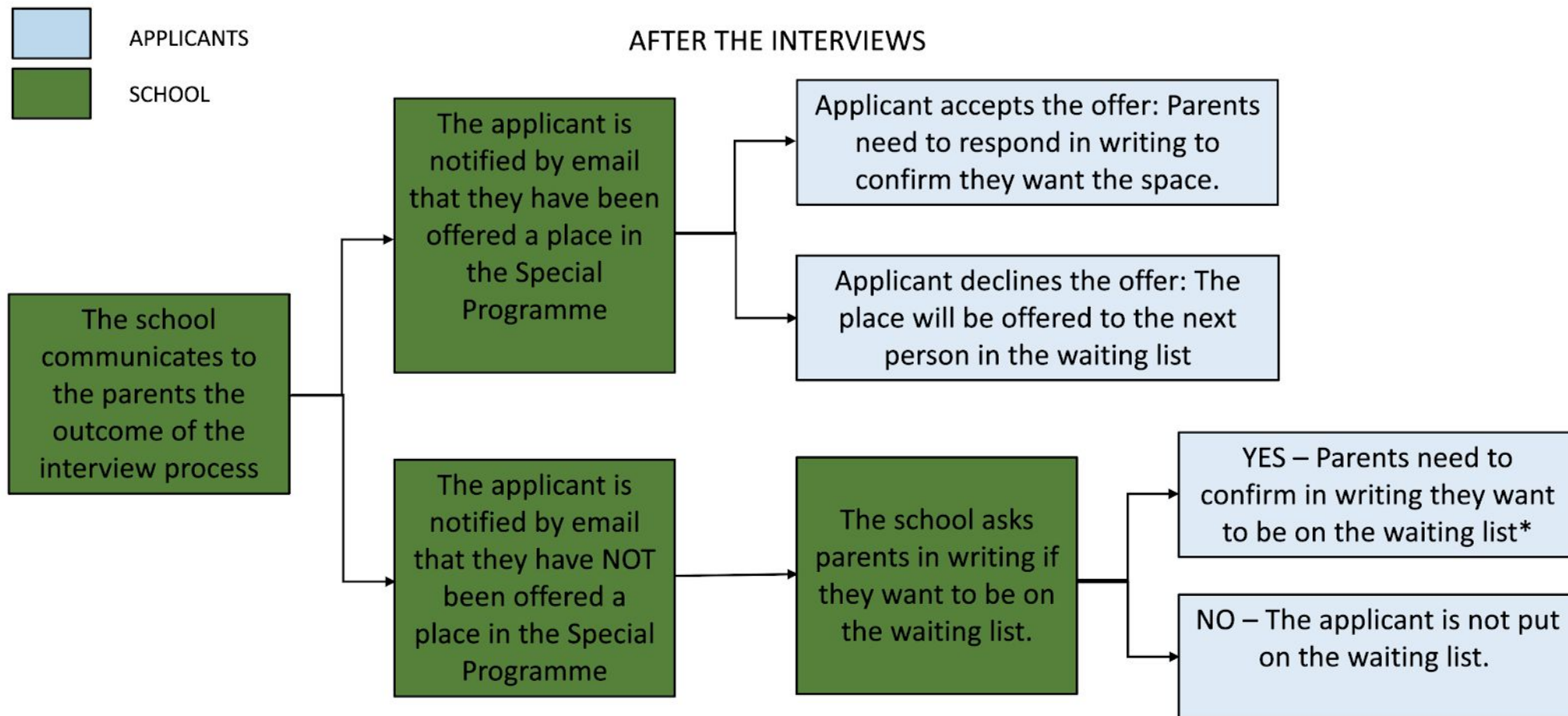
Criteria 3. Applicants who are siblings of former students of the special programme will be assigned a score **WHERE** parents or caregivers' adherence to the Special Programme Supporting Principles had been met during the time the former student was enrolled. **IF** those requirements were **NOT** met the score will be 0.

An applicant qualifying for points under criteria 2 is not eligible for points under criteria 3

Criteria 4. The criterion is not applicable for applicants entering Year 3 and above.

Criteria 5. An applicant qualifying for points under criteria 4 is not eligible for points under criteria 5.

After the interviews have taken place, applicants' families are notified by the school of the outcome:



At present, we have 8 spaces available for 2021.

Feel free to contact our office if you have any questions office@richmondroad.school.nz