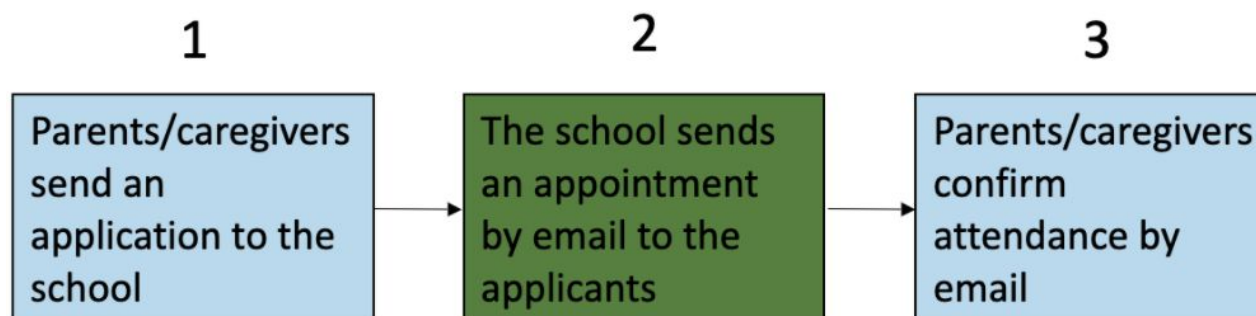


## Enrolment process for L'Archipel Special Programme

If you wish to apply for a space in L'Archipel Special Programme at Richmond Road School the current document will help you understand and follow the enrolment process.

The first steps of the enrolment process:



1. The application form for Special Programme can be found on the school's website [Enrolment](#) or requested from the school office [office@richmondroad.school.nz](mailto:office@richmondroad.school.nz)  
Applications must be received at the office no later than **Friday 25th of September 2020**.
2. Please provide evidence of your child's attendance to a French speaking pre-school for the last 12 month, if applicable.

The scoring system on which the point allocation is based at the interviews:

## SCORING SYSTEM

	Scoring System	Score
1	Proficiency in French Language	1-10
2	Siblings of current students in the L'Archipel Special Programme, a child of an employee of the board of the school or a child of a member of the board of the school.	4
3	Siblings of former students in the L'Archipel Special Programme.	3
4	Applicants who have attended any New Zealand based French language provider on a regular basis for at least the preceding year (evidence must be provided*).	3
5	Applicants who have attended any other overseas French school or preschool on a regular basis for at least the preceding year (evidence must be provided*).	1
6	A child of a former student in the L'Archipel Special Programme.	1
7	Eligible applicants who live in-zone of the school.	1

\*E.g. certificates, receipts, invoices showing length/period of attendance

### Important Notes

**Criteria 1.** Proficiency in the French language will be assessed using documented methodology developed by FRENZ (and approved by the Board of Trustees).

The proficiency of an applicant will be ranked on a scale of 0 to 10, 0 being no ability and 10 being fluent in French.

The score given to any applicant will be determined by a teacher and a person appointed by FRENZ (with the approval of the school Board of Trustees). The decision will be final and not subject to appeal.

**Criteria 2.** Applicants who are siblings of current students of the Special Programme will be assigned 4 points **WHERE** parents or caregivers' adherence to the Special Programme Supporting Principles have been met.

**IF** those requirements have **NOT** been met, the score will be 0.

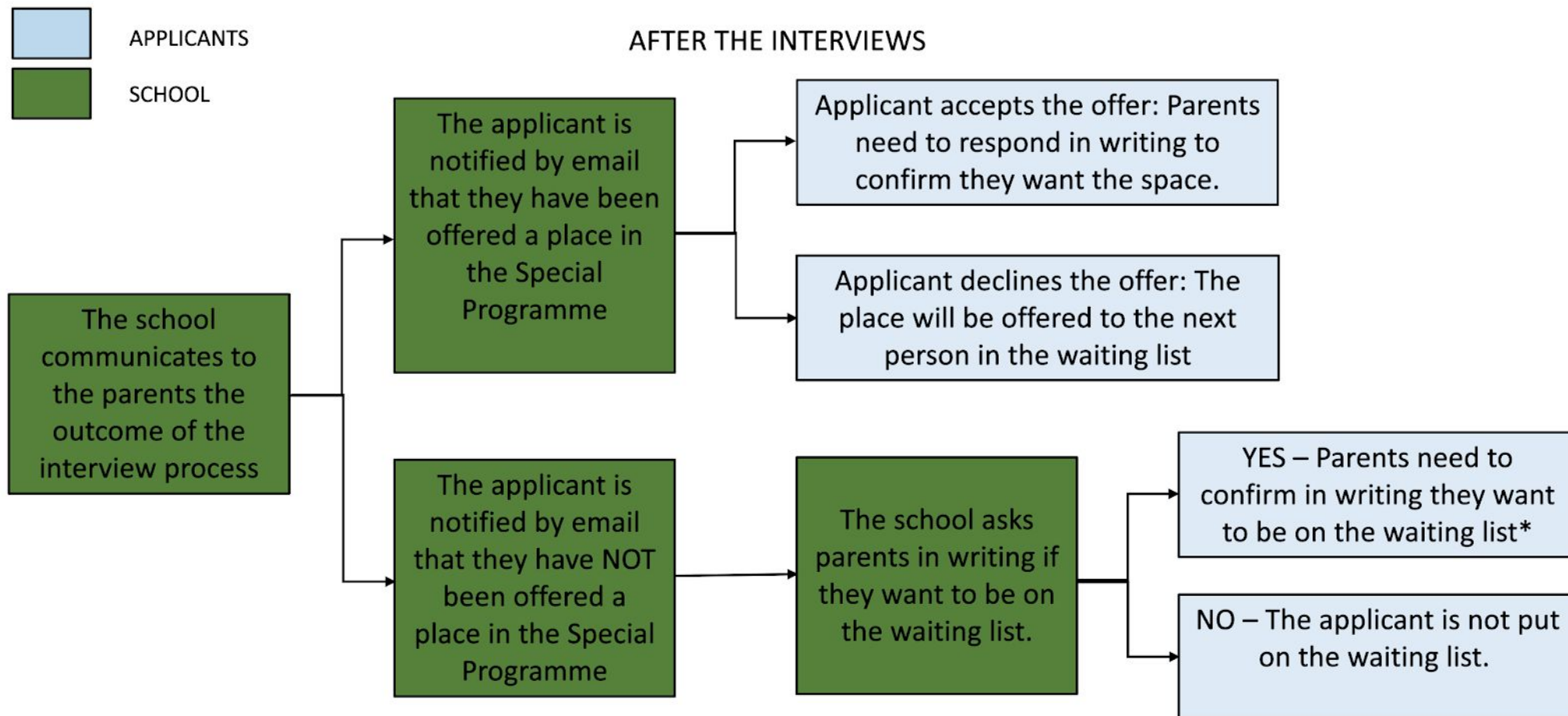
**Criteria 3.** Applicants who are siblings of former students of the special programme will be assigned a score **WHERE** parents or caregivers' adherence to the Special Programme Supporting Principles had been met during the time the former student was enrolled. **IF** those requirements were **NOT** met the score will be 0.

[An applicant qualifying for points under criteria 2 is not eligible for points under criteria 3](#)

**Criteria 4.** The criterion is not applicable for applicants entering Year 3 and above.

**Criteria 5.** An applicant qualifying for points under criteria 4 is not eligible for points under criteria 5.

After the interviews have taken place, applicants' families are notified by the school of the outcome:



At present, we have 8 spaces available for 2021.

Feel free to contact our office if you have any questions [office@richmondroad.school.nz](mailto:office@richmondroad.school.nz)