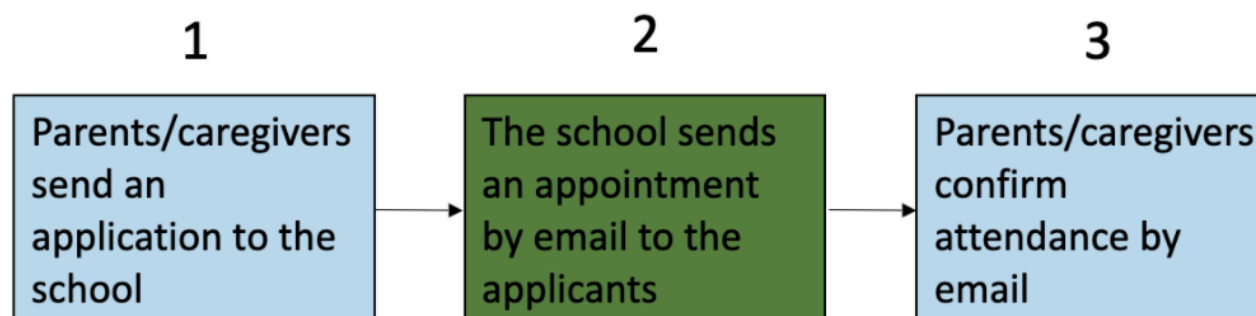


## Enrolment process for L'Archipel Special Programme

If you wish to apply for a space in L'Archipel Special Programme at Richmond Road School the current document will help you understand and follow the enrolment process.

The first steps of the enrolment process:



The application form for Special Programme can be found on the school's website [Enrolment](#) or requested from the school office [office@richmondroad.school.nz](mailto:office@richmondroad.school.nz)

Applications must be received at the office no later than: (Deadline TBC)

The scoring system on which the point allocation is based at the interviews:

## SCORING SYSTEM

#	Scoring system	Points
1	Proficiency in French language	0-10
2	Siblings of current students in the l'Archipel Special Programme, a child of an employee of the school board or a child of a member of the school board	4
3	Siblings of former students in the l'Archipel Special Programme	3
4	A child of a former student of l'Archipel Special Programme	1
5	Applicants who have been in New Zealand full time for at least the preceding 2 years as of June of the year of application.	2
6	Eligible applicants who live in-zone of the school	1
<b>Total of points</b>		

Note: We will take into consideration if applicants have attended a French speaking programme prior to their application for L'Archipel. This may be advantageous for the applicants. Applicants should bring evidence of attendance along to the interview (e.g. certificates, invoices showing the period and frequency of attendance)

### Important Notes

**Criteria 1.** Proficiency in the French language will be assessed using documented methodology developed by FRENZ (and approved by the Board of Trustees).

The proficiency of an applicant will be ranked on a scale of 0 to 10, 0 being no ability and 10 being fluent in French.

The score given to any applicant will be determined by a teacher and a person appointed by FRENZ (with the approval of the school Board of Trustees). The decision will be final and not subject to appeal.

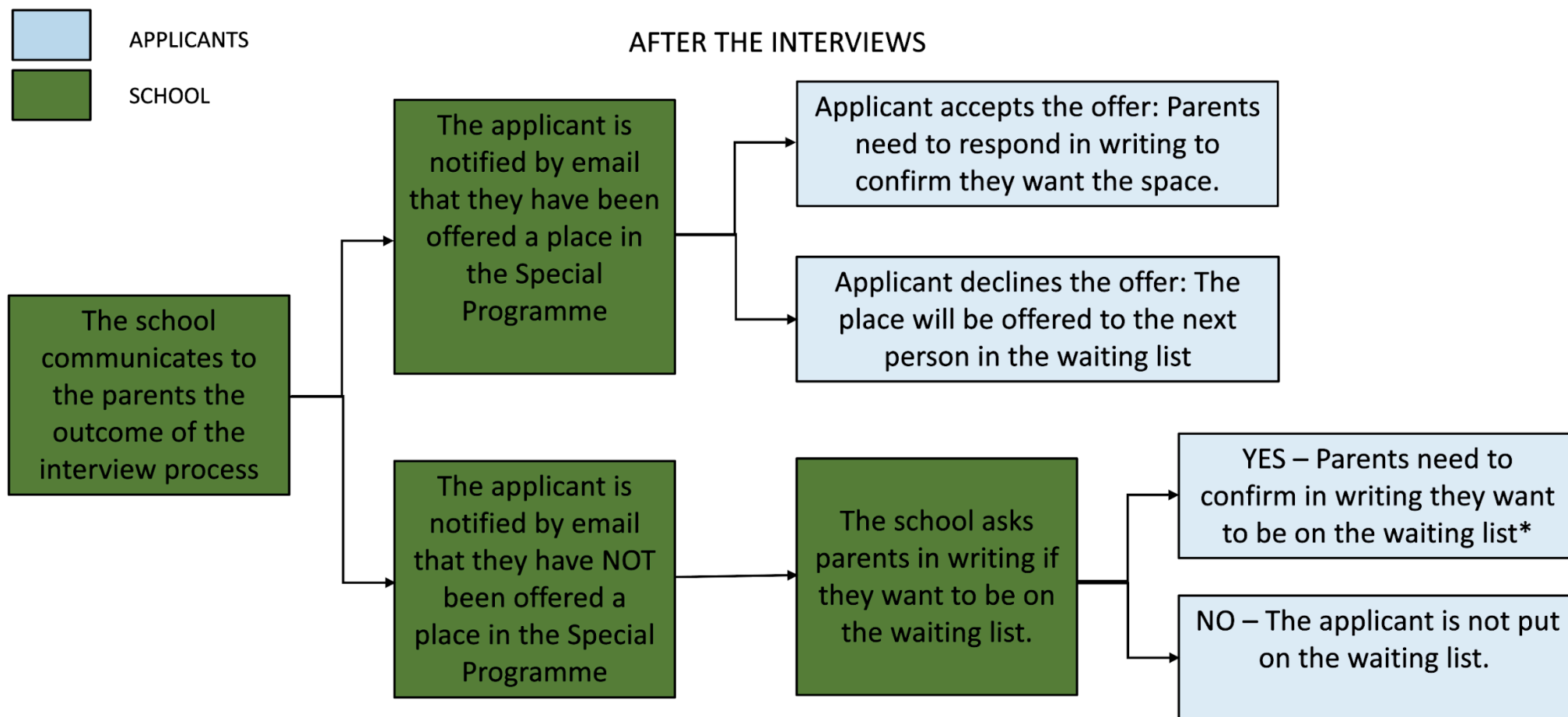
**Criteria 2.** Applicants who are siblings of current students of the Special Programme will be assigned 4 points **WHERE** parents or caregivers' adherence to the Special Programme Supporting Principles have been met.

**IF** those requirements have **NOT** been met, the score will be 0.

**Criteria 3.** Applicants who are siblings of former students of the special programme will be assigned a score **WHERE** parents or caregivers' adherence to the Special Programme Supporting Principles had been met during the time the former student was enrolled. **IF** those requirements were **NOT** met the score will be 0.

An applicant qualifying for points under criteria 2 is not eligible for points under criteria 3

After the interviews have taken place, applicants' families are notified by the school of the outcome:



At present, we have: (number of spaces available TBC)

Feel free to contact our office if you have any questions [office@richmondroad.school.nz](mailto:office@richmondroad.school.nz)